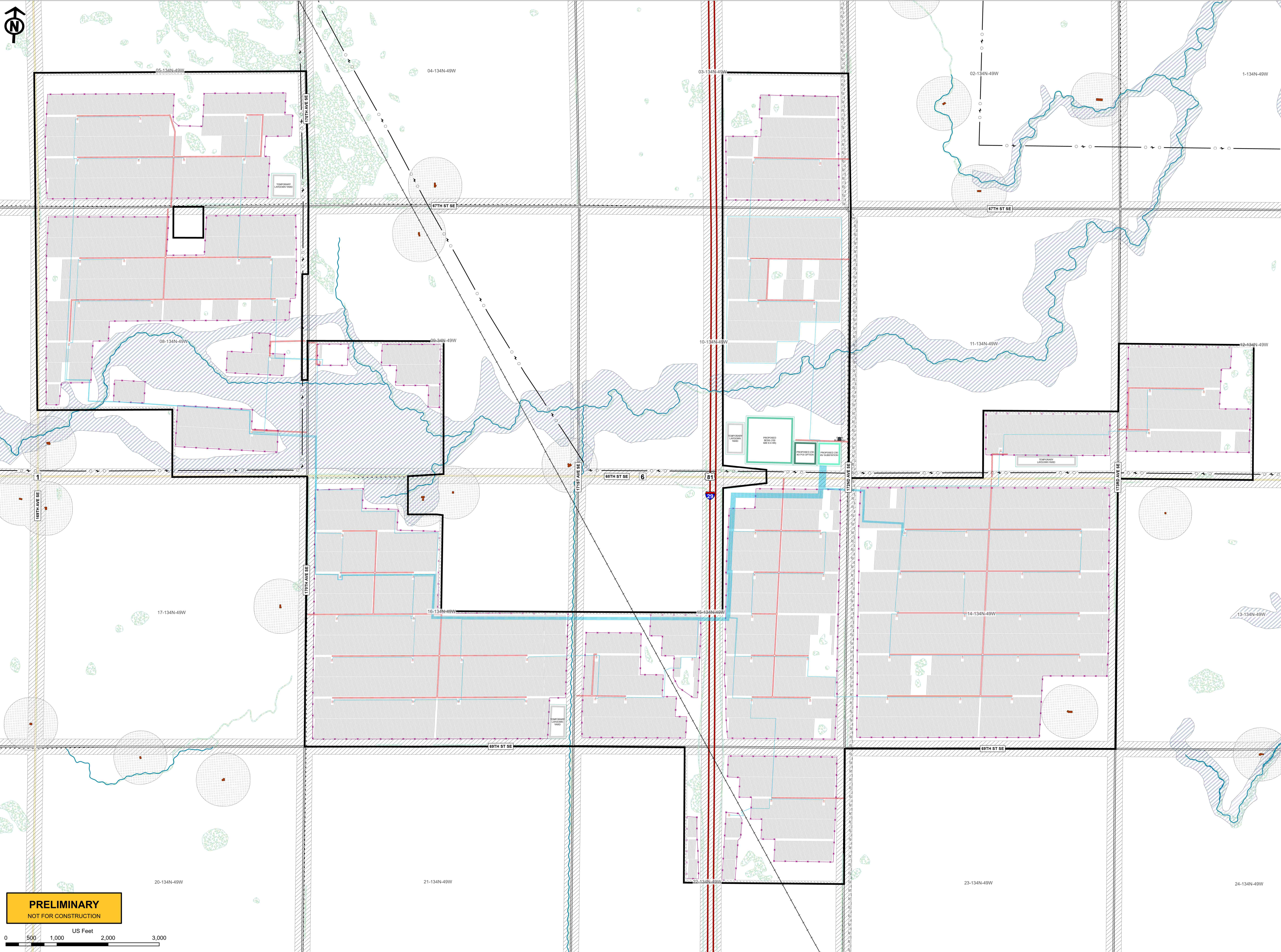


# **Figure 2 - Preliminary Site Plan Updated**





**PRELIMINARY**  
NOT FOR CONSTRUCTION

US Feet  
0 500 1,000 2,000 3,000

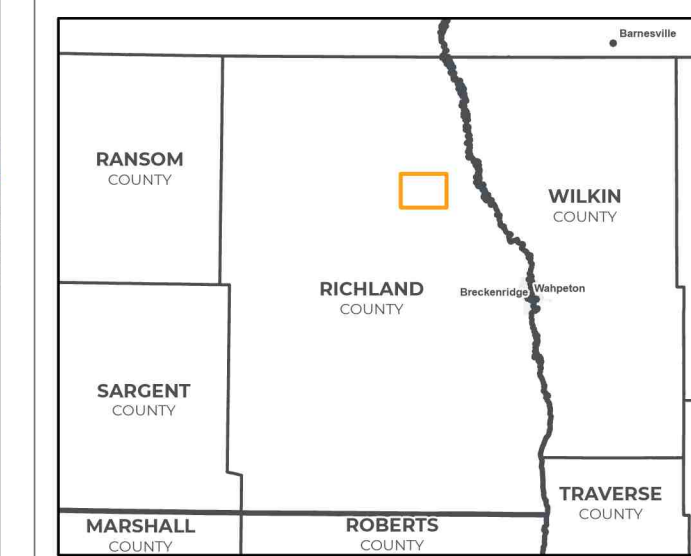
**PROJECT**  
FLICKERTAIL SOLAR  
PROJECT, LLC

**FIGURE 2 - PRELIMINARY  
SITE PLAN - REVISED**

- EXISTING SITE CONDITIONS**  
\*As Identified in Publicly Available Data
- INHABITED RESIDENCES
  - OVERHEAD ELECTRIC LINE
  - GAS LINE
  - FEMA FLOOD ZONE
  - RIVERS & CREEKS (NHD)
  - WETLAND (NWI)
  - INTERSTATE HIGHWAY
  - US HIGHWAY
  - COUNTY HIGHWAY
  - TOWNSHIP ROAD
  - RAILROAD TRACKS

- PROPOSED PROJECT LAYOUT**
- SOLAR INVERTER
  - SOLAR ARRAY
  - COLLECTION LINE
  - ACCESS ROAD
  - PERIMETER SECURITY FENCE
  - BATTERY ENERGY STORAGE SYSTEM (BESS)
  - LAYDOWN YARD
  - O&M FACILITY
  - COLLECTOR SUBSTATION
- Minnesota Interconnection Facilities**
- POI SWITCHING STATION

- MINIMUM SETBACKS**
- 500FT SETBACK FROM INHABITED RESIDENCES
  - 150FT SETBACK FROM ROAD CENTERLINE
  - 50FT PROPERTY LINE SETBACK



PRELIMINARY DESIGN - NOT FOR CONSTRUCTION

**PROJECT**  
FLICKERTAIL (RICHLAND COUNTY, NORTH DAKOTA)

DEVELOPER SAVION, LLC	ENGINEER LINDSEY WEISMAN
DATE 6/30/2023	SCALE 1 INCH : 800 FEET

**NOTES**

\*Revised 11/16/23 to show setbacks to all roads were increased to 150 feet from the centerline of road

**SHEET**  
FIGURE 2 - PRELIMINARY SITE PLAN - REVISED

Coordinate System: NAD 1983 StatePlane North Dakota South FIPS 3302 Feet

Confidential and proprietary information. | Copyright 2023 Savion, LLC

The following companies and organizations provided data that contributed to the production of this map - CoreLogic, Inc., Environmental Systems Research Institute (ESRI), ReGrid, Loveland Technologies, U.S. Department of Agriculture (USDA), U.S. Federal Aviation Administration (FAA), U.S. Geological Survey (USGS), WhiteStar Corporation, Ventyx, Inc., An ABB Company, Imagery © 2023 Hexagon and data partners.