

FIGURES

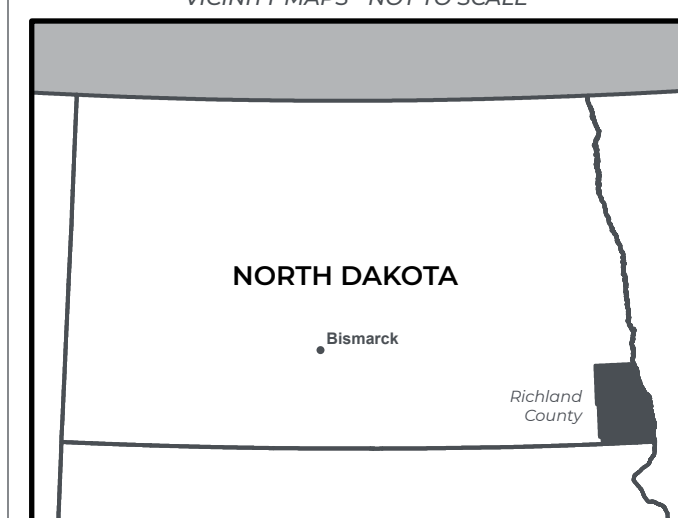
FLICKERTAIL SOLAR PROJECT

ABERCROMBIE TOWNSHIP | RICHLAND COUNTY, NORTH DAKOTA

PROJECT:
FLICKERTAIL SOLAR PROJECT, LLC

FIGURE 1 - SITE LOCATION MAP

- Project Area
- Interstate Highway
- US Highway
- County Highway
- Township Road
- State
- County
- Abercrombie Township
- City / Town
- Section



PRELIMINARY DESIGN - NOT FOR CONSTRUCTION

PROJECT:
FLICKERTAIL
DEVELOPER:
SAVION, LLC
DATE:
6/30/2023

ENGINEER:
LINDSEY WEISMAN
SCALE:
1 INCH = 2,500 FEET

NOTES:

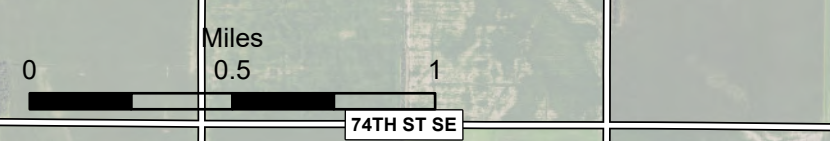
FIGURE 1 - SITE LOCATION MAP (24 X 36)

Coordinate System: NAD 1983 StatePlane North Dakota South FIPS 3302

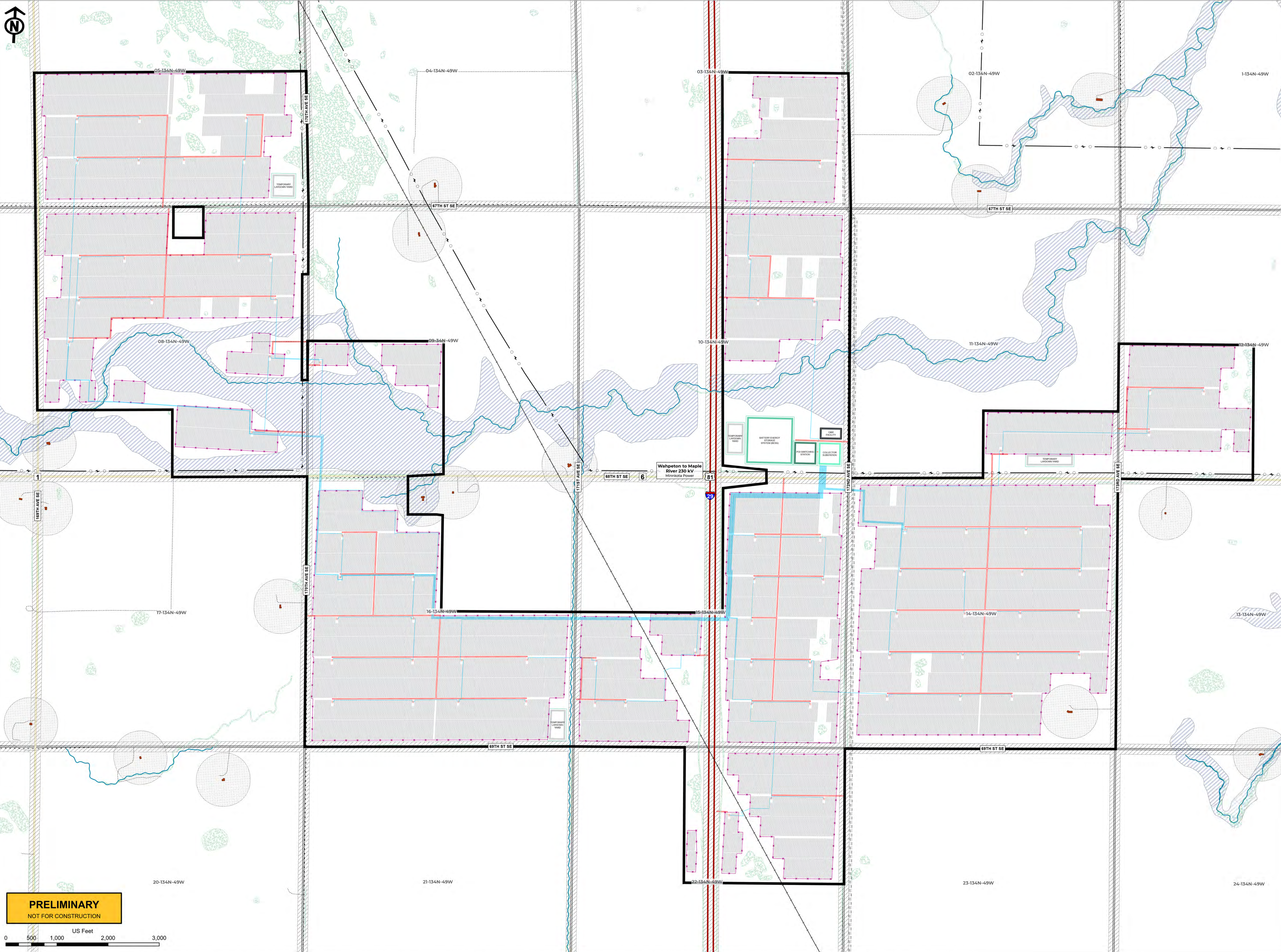
Confidential and proprietary information. | Copyright 2023 Savion, LLC



PRELIMINARY
NOT FOR CONSTRUCTION



The following companies and organizations provided data that contributed to the production of this map - CoreLogic, Inc., Environmental Systems Research Institute (ESRI), ReGrid, Loveland Technologies, U.S. Department of Agriculture (USDA), U.S. Federal Aviation Administration (FAA), U.S. Geological Survey (USGS), WhiteStar Corporation, Ventyx, Inc., An ABB Company, Imagery © 2023 Hexagon and data partners.



PROJECT
FLICKERTAIL SOLAR PROJECT, LLC

FIGURE 2 - PRELIMINARY SITE PLAN

- PROJECT AREA**
- EXISTING SITE CONDITIONS**
 *As Identified in Publicly Available Data
- INHABITED RESIDENCES
- OVERHEAD ELECTRIC LINE
- GAS LINE
- FEMA FLOOD ZONE
- RIVERS & CREEKS (NHD)
- WETLAND (NW)
- INTERSTATE HIGHWAY
- US HIGHWAY
- COUNTY HIGHWAY
- TOWNSHIP ROAD
- PRIVATE ROADS
- RAILROAD TRACKS
- PROPOSED PROJECT LAYOUT**
- SOLAR INVERTER
- SOLAR ARRAY
- 230 KV GEN TIE LINE
- COLLECTION LINE
- ACCESS ROAD
- PERIMETER SECURITY FENCE
- BATTERY ENERGY STORAGE SYSTEM (BESS)
- LAYDOWN YARD
- O&M FACILITY
- COLLECTOR SUBSTATION
- Minnkota Interconnection Facilities**
- POI SWITCHING STATION
- MINIMUM SETBACKS**
- 500FT SETBACK FROM INHABITED RESIDENCES
- 100FT SETBACK FROM ROADS

PRELIMINARY
 NOT FOR CONSTRUCTION

US Feet
 0 500 1,000 2,000 3,000

SAVION
 A RENEWABLE ENERGY COMPANY

PRELIMINARY DESIGN - NOT FOR CONSTRUCTION

PROJECT
 FLICKERTAIL (RICHLAND COUNTY, NORTH DAKOTA)

DEVELOPER SAVION, LLC	ENGINEER LINDSEY WEISMAN
DATE 6/30/2023	SCALE 1 INCH = 800 FEET

NOTE:

SHEET:
FIGURE 2 - PRELIMINARY SITE PLAN (24 X 36)

Coordinate System: NAD 1983 StatePlane North Dakota South FIPS 3302 Feet

Confidential and proprietary information. | Copyright 2023 Savion, LLC

The following companies and organizations provided data that contributed to the production of this map - CoreLogic, Inc., Environmental Systems Research Institute (ESRI), ReGrid, Loveland Technologies, U.S. Department of Agriculture (USDA), U.S. Federal Aviation Administration (FAA), U.S. Geological Survey (USGS), WhiteStar Corporation, Ventyx, Inc., An ABB Company, Imagery © 2023 Hexagon and data partners.

PROJECT:
FLICKERTAIL SOLAR PROJECT, LLC

FIGURE 3 - EXISTING LAND USES AND ZONING DISTRICT CLASSIFICATION

EXISTING SITE CONDITIONS

- *As identified in Publicly Available Data
- ▲ INHABITED RESIDENCES
 - OVERHEAD ELECTRIC LINE
 - GAS LINE
 - ▨ FEMA FLOOD ZONE
 - RIVERS & CREEKS (NHD)
 - WETLAND (NWI)
 - INTERSTATE HIGHWAY
 - US HIGHWAY
 - COUNTY HIGHWAY
 - TOWNSHIP ROAD
 - PRIVATE ROADS
 - RAILROAD TRACKS

USA NLCD LAND COVER

- OPEN WATER
- DEVELOPED OPEN SPACE
- DEVELOPED LOW INTENSITY
- DEVELOPED MEDIUM INTENSITY
- DEVELOPED HIGH INTENSITY
- DECIDUOUS FOREST
- EVERGREEN FOREST
- MIXED FOREST
- GRASSLAND/HERBACEOUS
- PASTURE/HAY
- CULTIVATED CROPS
- WOODY WETLANDS
- EMERGENT HERBACEOUS WETLANDS

ABERCROMBIE TOWNSHIP:
ALL LAND WITHIN TOWNSHIP ZONED -
"AGRICULTURAL" / A-1 AGRICULTURAL
DISTRICT



PRELIMINARY DESIGN - NOT FOR CONSTRUCTION

PROJECT:
FLICKERTAIL (RICHLAND COUNTY, NORTH DAKOTA)

DEVELOPER:
SAVION, LLC

ENGINEER:
LINDSEY WEISMAN

DATE:
6/30/2023

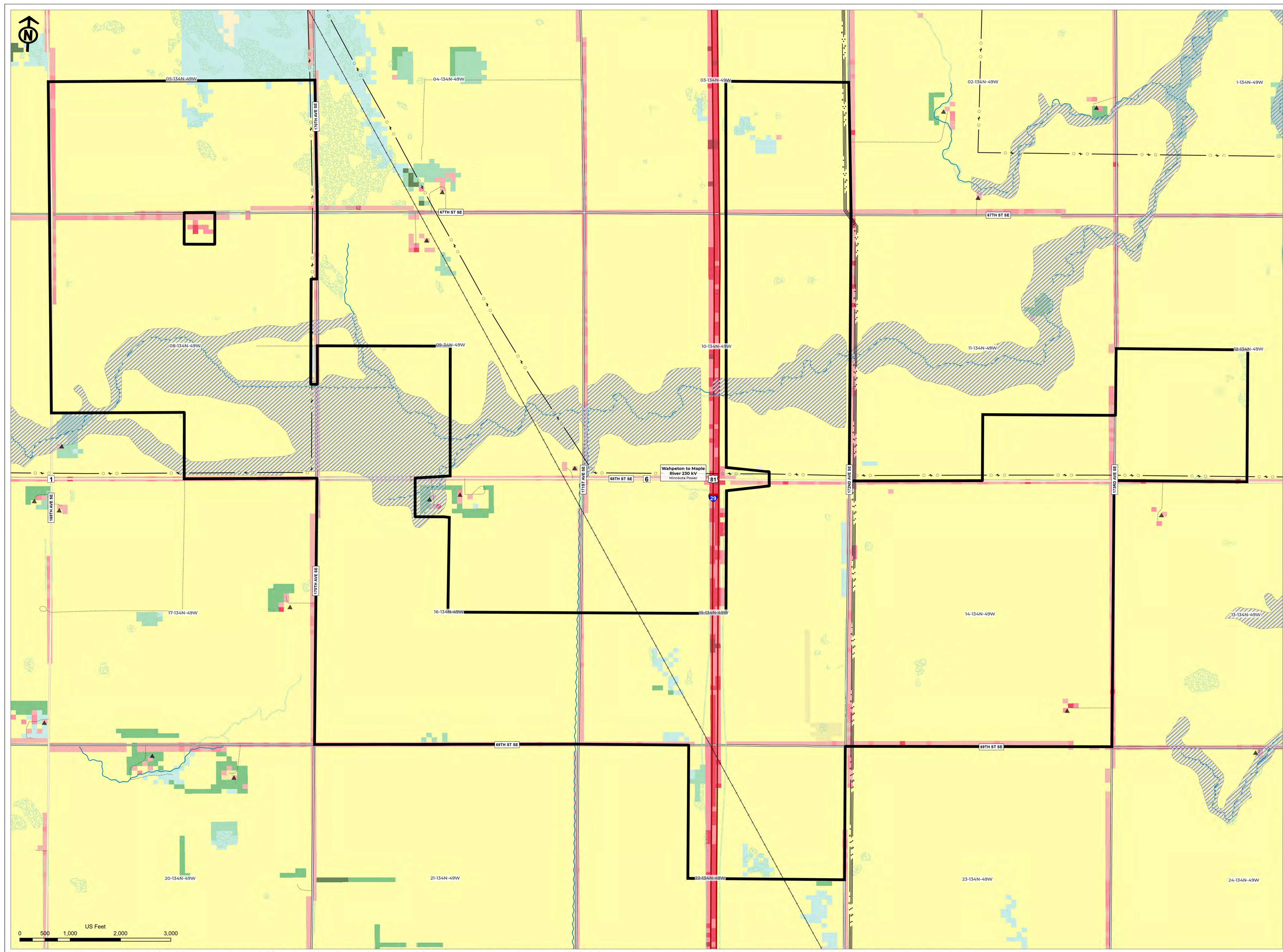
SCALE:
1 INCH = 800 FEET

NOTE:

SHEET:
EXISTING LAND USES AND ZONING DISTRICT CLASSIFICATION

Coordinate System: NAD 1983 StatePlane North Dakota South FIPS 3302 Feet

Confidential and proprietary information. | Copyright 2023 Savion, LLC



The following companies and organizations provided data that contributed to the production of this map - CoreLogic, Inc., Environmental Systems Research Institute (ESRI), ReGrid, Loveland Technologies, U.S. Department of Agriculture (USDA), U.S. Federal Aviation Administration (FAA), U.S. Geological Survey (USGS), WhiteStar Corporation, Ventyx, Inc., An ABB Company, Imagery © 2023 Hexagon and data partners.