

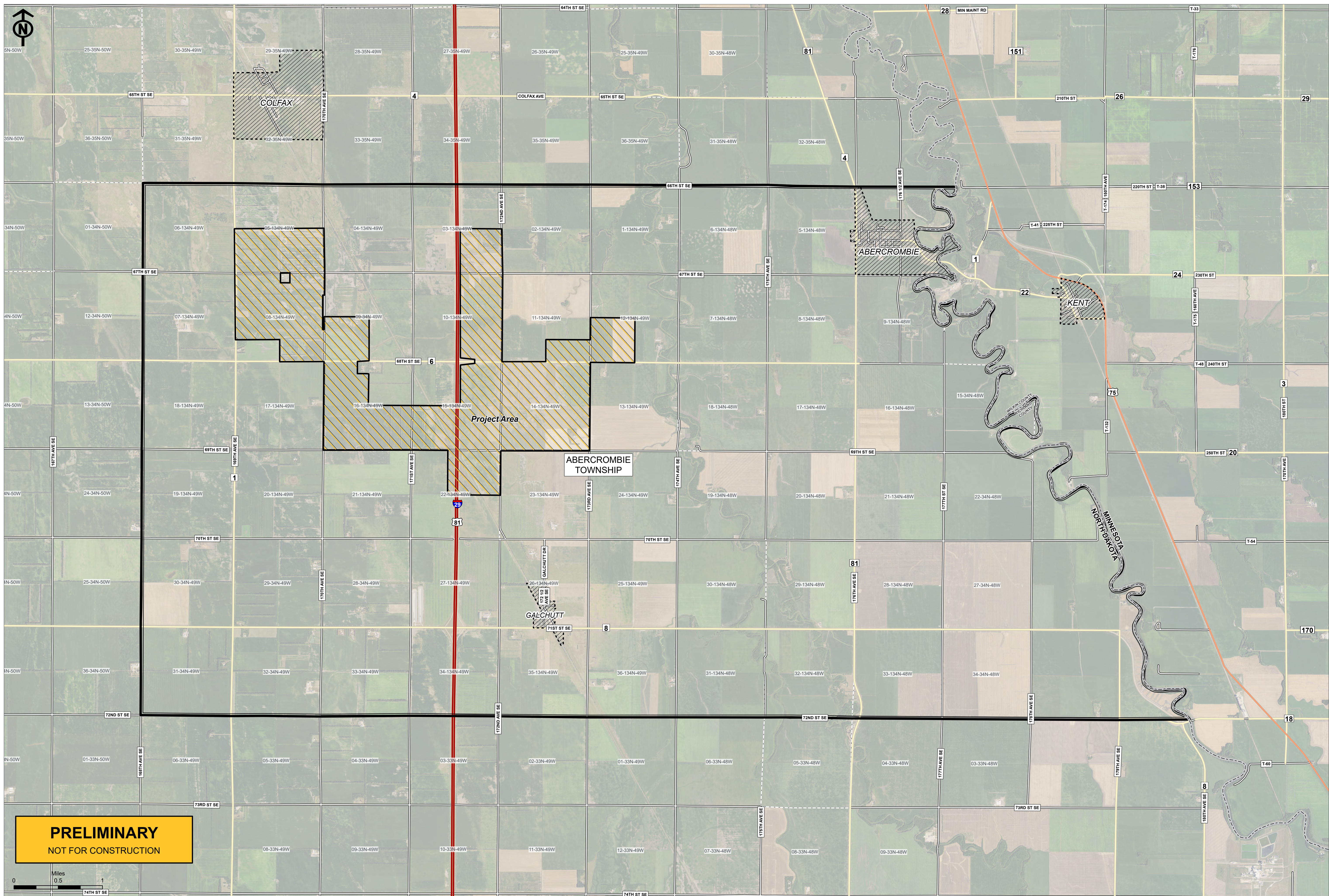
FLICKERTAIL SOLAR PROJECT

ABERCROMBIE TOWNSHIP | RICHLAND COUNTY, NORTH DAKOTA

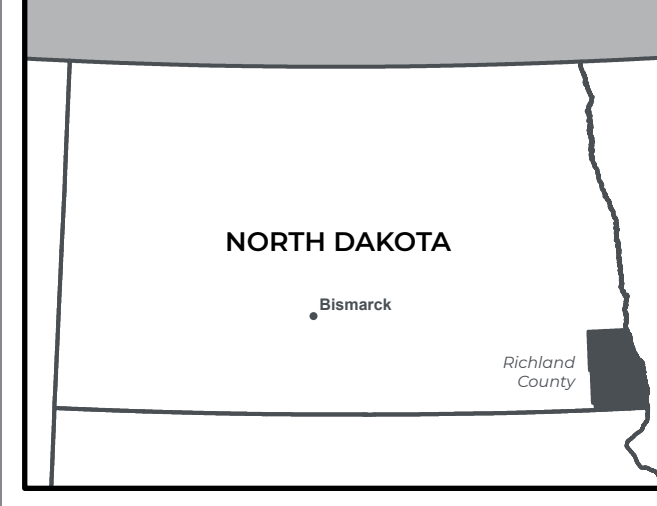
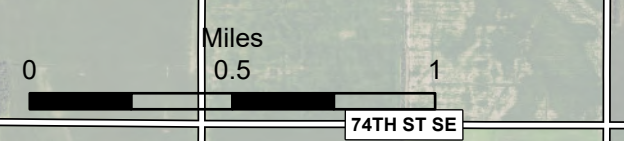
PROJECT:
FLICKERTAIL SOLAR PROJECT, LLC

FIGURE 1 - SITE LOCATION MAP

- Project Area
- Interstate Highway
- US Highway
- County Highway
- Township Road
- State
- County
- Abercrombie Township
- City / Town
- Section



PRELIMINARY
NOT FOR CONSTRUCTION



PRELIMINARY DESIGN - NOT FOR CONSTRUCTION

PROJECT:
FLICKERTAIL

DEVELOPER:
SAVION, LLC

ENGINEER:
LINDSEY WEISMAN

DATE:
6/30/2023

SCALE:
1 INCH = 2,500 FEET

NOTES:

FIGURE 1 - SITE LOCATION MAP (24 X 36)

Coordinate System: NAD 1983 StatePlane North Dakota South FIPS 3302 Feet
Confidential and proprietary information. | Copyright 2023 Savion, LLC

The following companies and organizations provided data that contributed to the production of this map - CoreLogic, Inc., Environmental Systems Research Institute (ESRI), ReGrid, Loveland Technologies, U.S. Department of Agriculture (USDA), U.S. Federal Aviation Administration (FAA), U.S. Geological Survey (USGS), WhiteStar Corporation, Ventyx, Inc., An ABB Company, Imagery © 2023 Hexagon and data partners.